



Innovation. Education. Community.

# 2025 Membership Prospectus





# Membership Value Proposition

Engage with a community of leading technology practitioners and providers, world-class university educators and researchers, emerging technology originators, and a talented student population.

## Access our network

CxOs representing Fortune 500 companies

Public Sector Entities

Startups and Emerging Technology Companies



## Events

Virtual thought leadership sessions

Quarterly in-person networking and social events

Select speaking and presentation opportunities



## Access to UCLA resources

UCLA content and research

Access to UCLA talent pool

Student mentorship/teaching opportunities





# Membership Tiers

## Tier 1 Corporate

### INDIVIDUAL & VIP tier benefits, plus:

- Benefits open to entire organization
- Student engagement (e.g., access to interns, student programs, & mentorship opportunities, etc.)
- Promotional opportunities on Innovate@UCLA mailers

## Tier 2 VIP

### INDIVIDUAL tier benefits, plus:

- Attend exclusive events (CXO Exchange - Practitioners only, Evanta, etc.)
- Newsletter spotlight (Providers - Case study spotlight)
- Speaking opportunities (events and with students)
- May be considered for Innovate@UCLA board service

\*Requires Innovate@UCLA interview

## Tier 3 Individual

### INDIVIDUAL tier benefits:

- Attend general in-person and virtual events
- Typically includes meals/beverages, where available, at no additional fee
- Networking & access
- Content as available from events
- Receive Innovate@UCLA newsletter

\*Not available for Providers

# Membership Tier Prices

## Corporate

(All Company, All Events)

- Public Sector (\$3,500)
- Practitioner Revenue < \$1B (\$3,500)
- Practitioner Revenue > \$1B (\$7,000)
- Services Providers (\$7,000)

## VIP

(One Person, All Events)

- Public Sector (\$1,500)
- Practitioner Revenue < \$1B (\$1,750)
- Practitioner Revenue > \$1B (\$1,750)
- Services Providers (N/A)

## Individual

(One Person, Non-Exclusive Events)

- Public Sector (\$275)
- Practitioner Revenue < \$1B (\$325)
- Practitioner Revenue > \$1B (\$325)
- Services Providers (N/A)



# BOARD MEMBERS

Committed to a diversity of perspectives



**Bhupesh Arora**  
Executive Chair  
CTO, Howard Hughes



**Beth Apillanes**  
Vice Chair  
Manager, Enterprise Technology, NASA JPL



**Jim Rinaldi**  
Executive Director, Innovate@UCLA  
Former CIO, JPL



**Davida Johnson**  
Executive Sponsor  
Executive Director, UCLA OARC



**Thomas Phelps**  
Immediate Past Chair, Gartner Events Chair  
SVP & CIO, Laserfiche



**Lea Eriksen**  
Membership Chair  
Director of Technology & Innovation & CIO,  
City of Long Beach



**Howard Miller**  
Membership Vice-Chair  
CIO, UCLA Anderson School  
of Management



**Greg Moore**  
Sponsorship Chair  
VP, CIO, KB Home



**Greg Geary**  
Sponsorship Vice-Chair  
SVP & CIO, Whittier Trust Company



**Doug Goetz**  
Governance Committee Chair  
SVP, Operational Resilience & Compliance,  
Fox Corporation



**Theresa Miller**  
WIT Committee Chair  
Former CIO & EVP, Information Technology,  
Lionsgate



**Andy Schlei**  
Executive Leadership Awards (ELA) Chair  
Former SVP, Sony Pictures Entertainment



**Kevin Gray**  
Programs Vice-Chair  
CTO, Metrolink/Southern California  
Regional Rail Authority



**Joseph Cevetello**  
Programs Event Chair  
Former Director Public and Social Impact,  
Slalom



**Lucy Avetisyan**  
UCLA CIO  
Associate Vice Chancellor and CIO,  
UCLA IT Services



**Bill Goodin**  
Faculty Advisor (Samueli)  
Faculty Advisor, UCLA Henry Samuel School  
of Engineering & Applied Science



**Heather Felix**  
Anderson Advisor  
Program Director, UCLA Anderson's  
Easton Technology Management  
Center



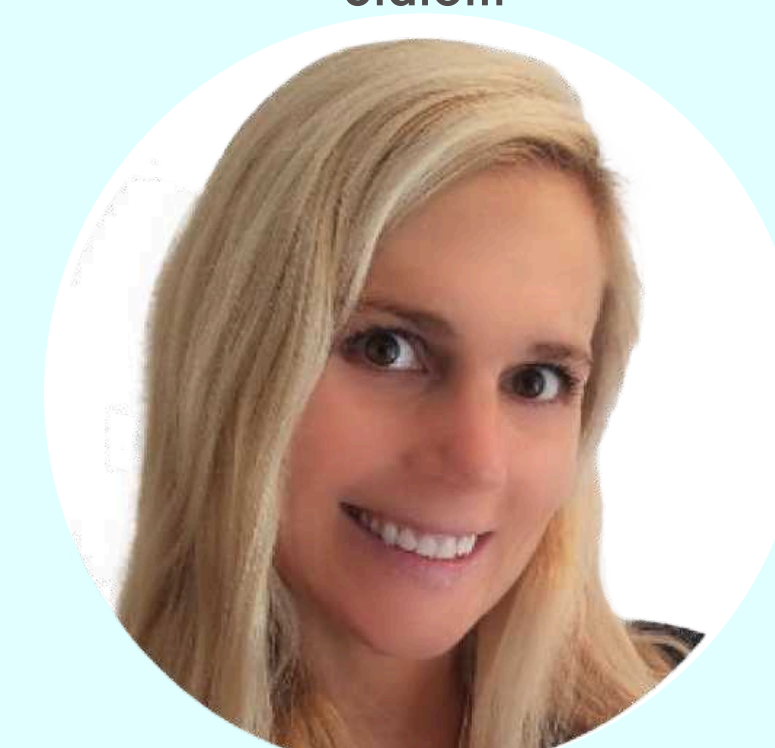
**Rob Devers**  
Sponsorship Committee  
VP & CIO, Majestic Realty Co.



**Heidi Pease**  
WIT, Executive Leadership Awards (ELA) Committee  
CEO, LA Blockchain Lab Wave Financial,  
Head of Special Operations



**Michael Wang**  
Sponsorship Committee  
CIO/CISO & Vice President,  
Digital Innovation, Epson  
America, Inc.



**Piper O'Brien**  
WIT Committee  
Client Solutions Manager,  
iSpace



**Manjit Singh**  
Executive Leadership Awards (ELA) Committee  
CEO, SR Labs, Inc.



**Randi Levin**  
WIT Committee  
Former CIO, Jet Propulsion Lab (JPL)



**Tammy Choy**  
WIT Committee  
Director of Cybersecurity, LA28  
Olympic & Paralympic Games



**Beverly Macy**  
Executive Leadership Awards (ELA) Committee  
Educator, UCLA



**Trent Johnson**  
Industry/Academic Partnerships  
Chief Strategy Officer,  
Cie



**Melanie Hildebrandt**  
WIT, Industry/Academic Partnerships  
EVP & CIO, Endeavor



**Ghalib Kassam**  
Programs Committee  
CIO, Los Angeles Times



**Nyariana Maiko**  
Membership Committee  
CIO, Port of Long Beach



**Snezana Sibalic**  
Program Manager  
Innovate@UCLA

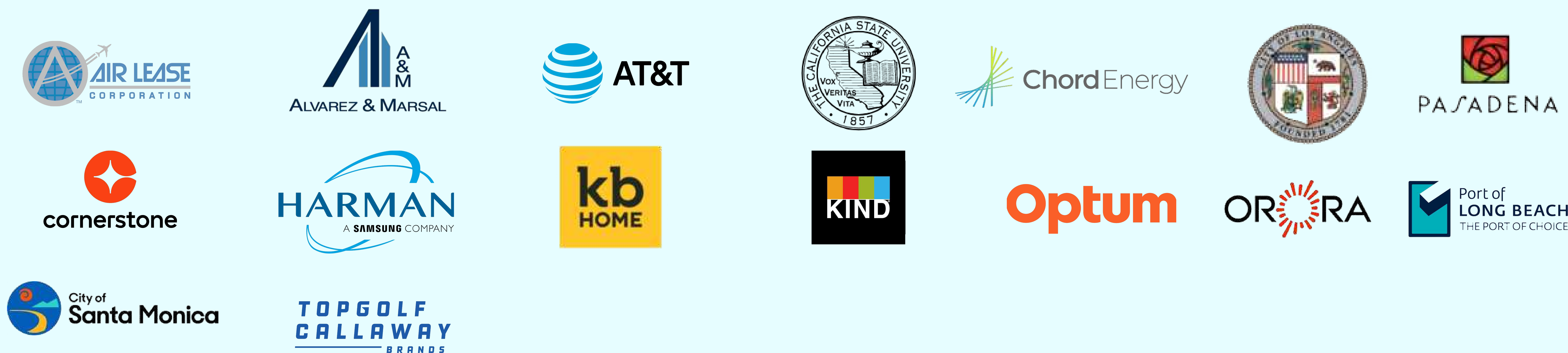


# Our Members, Your Network

## TIER 1



## TIER 2



## TIER 3







Follow Us



Email  
[info@innovateucla.org](mailto:info@innovateucla.org)

Web  
[innovateucla.org](http://innovateucla.org)