



# INNOVATE@UCLA

Innovation. Education. Community.

## 2025 SPONSORSHIP PROSPECTUS



[contact info@innovateucla.org](mailto:contactinfo@innovateucla.org)

# WHY INNOVATE@UCLA?

Innovate@UCLA connects the tech community with industry thought leaders and world-renowned academia and students.

Through Innovate@UCLA's mission of innovation and community members gain a range of enriching experiences and insight that take them on their digital journey.

**Highlight** your organization's point of view on the topics that matter most to IT leaders

- Topic alignment with company's offerings
- On stage speaking Executive speaking opportunities\*
- Hot topic opening remarks

**Build brand** awareness & gain exposure to a new set of prospective customers

- On site branding
- Dedicated marketing mailer
- Company logo on event website

Opportunities to make meaningful **connections** with IT leaders from a variety of industries & companies

- Access to opt-in attendee contact info
- Connect with IT executives in an intimate setting
- Built-in networking time throughout event

Past event attendees include IT leaders from:

LIONSGATE™

AVASANT



EPSON

JPL

cie



slalom

kb  
HOME

CAA

Laserfiche®

AEROSPACE

CITY OF  
BURBANK

\*Based on availability

# SPONSORSHIP OPPORTUNITIES

BENEFITS	Regular Events - Summits, CXO Exchanges, WIT Events			Executive Leadership Awards Event		
	NETWORKING	PLATINUM	VIRTUAL	PLATINUM	GOLD	SILVER
Sponsorship recognition at the event	✓	✓	✓	✓	✓	✓
Name & logo on event material	✓	✓	✓	✓	✓	✓
Table & display of printed material at non-virtual events		✓	✓	✓	✓	n/a
Employee Event Passes	2	4	n/a	4	3	2
Paragraph summary in a pre-event email to members	1	2	1	4	2	n/a
Qualified Event Passes		✓	2	up to 4	1	1
3-5 min presentation during the event		✓	✓	✓	n/a	n/a
Website Recognition		✓	✓	✓	✓	✓
List of company names & titles of registered attendees prior to event		✓	✓	✓	n/a	n/a
Opt-in prompt during registration		✓	✓	✓	✓	n/a
* Members; ** Non-Members	\$2,500* \$3,500**	\$5,000* \$7,500**	\$2,500	\$15,000	\$7,500	\$5,000

# BOARD MEMBERS

Committed to a diversity of perspectives



**Bhupesh Arora**  
Executive Chair  
CTO, Howard Hughes



**Beth Apillanes**  
Vice Chair  
Manager, Enterprise Technology, NASA JPL



**Jim Rinaldi**  
Executive Director, Innovate@UCLA  
Former CIO, JPL



**Davida Johnson**  
Executive Sponsor  
Executive Director, UCLA OARC



**Thomas Phelps**  
Immediate Past Chair, Evanta Events Chair  
SVP & CIO, Laserfiche



**Lea Eriksen**  
Membership Chair  
Director of Technology & Innovation & CIO,  
City of Long Beach



**Howard Miller**  
Membership Vice-Chair  
CIO, UCLA Anderson School  
of Management



**Greg Moore**  
Sponsorship Chair  
VP, CIO, KB Home



**Greg Geary**  
Sponsorship Vice-Chair  
SVP & CIO, Whittier Trust Company



**Doug Goetz**  
Governance Committee Chair  
SVP, Operational Resilience & Compliance,  
Fox Corporation



**Theresa Miller**  
WIT Committee Chair  
Former CIO & EVP, Information Technology,  
Lionsgate



**Andy Schlei**  
Executive Leadership Awards (ELA) Chair  
Former SVP, Sony Pictures Entertainment



**Kevin Gray**  
Programs Vice-Chair  
CTO, Metrolink/Southern California  
Regional Rail Authority



**Joseph Cevetello**  
Programs Event Chair  
Director Public and Social Impact,  
Slalom



**Lucy Avetisyan**  
UCLA CIO  
Associate Vice Chancellor and CIO,  
UCLA IT Services



**Bill Goodin**  
Faculty Advisor (Samueli)  
Faculty Advisor, UCLA Henry Samuel School  
of Engineering & Applied Science



**Heather Felix**  
Anderson Advisor  
Program Director, UCLA Anderson's  
Easton Technology Management  
Center



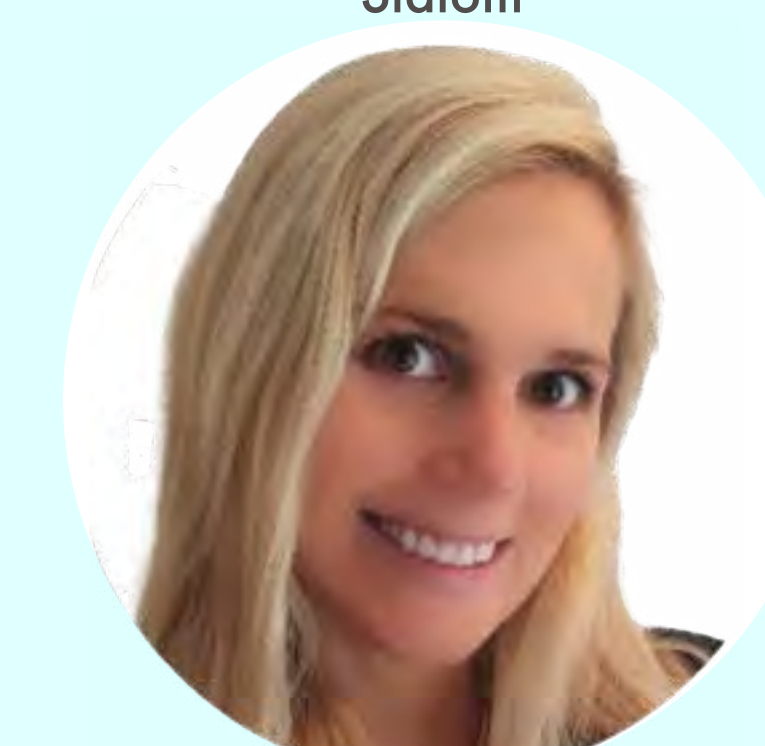
**Rob Devers**  
Sponsorship Committee  
VP & CIO, Majestic Realty Co.



**Heidi Pease**  
WIT, Executive Leadership Awards (ELA) Committee  
CEO, LA Blockchain Lab Wave Financial,  
Head of Special Operations



**Michael Wang**  
Sponsorship Committee  
CIO/CISO & Vice President,  
Digital Innovation, Epson  
America, Inc.



**Piper O'Brien**  
WIT Committee  
Client Solutions Manager,  
iSpace



**Man Jit Singh**  
Executive Leadership Awards (ELA) Committee  
CEO, SR Labs, Inc.



**Randi Levin**  
WIT Committee  
Former CIO, Jet Propulsion Lab (JPL)



**Tammy Choy**  
WIT Committee  
Director of Cybersecurity, LA28  
Olympic & Paralympic Games



**Beverly Macy**  
Executive Leadership Awards (ELA) Committee  
Educator, UCLA



**Trent Johnson**  
Industry/Academic Partnerships  
SVP & Chief Strategy Officer,  
Cie



**Melanie Hildebrandt**  
WIT, Industry/Academic Partnerships  
EVP & CIO, Endeavor



**Ghalib Kassam**  
Programs Committee  
CIO, Los Angeles Times



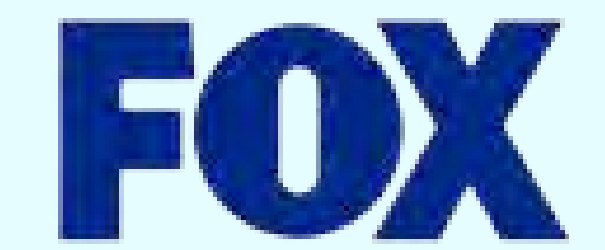
**Nyariana Maiko**  
CIO, Port of Long Beach



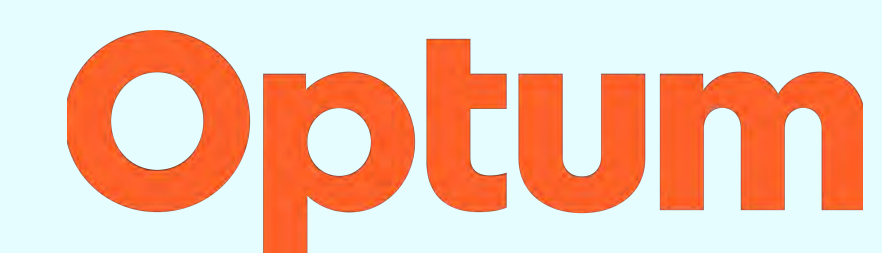
**Snezana Sibalic**  
Program Manager  
Innovate@UCLA

# Our Members, Your Network

## TIER 1



## TIER 2



## TIER 3

